

Grasso INGENIUM 250

Specifications

Marka	Grasso
Typ	INGENIUM 250
Typ produktu	Water Cooled Chiller
Ogólna wydajność w kW	224,3
Ogólna wydajność w	63,8
Tonaż	
Czynnik chłodzący	NH 3 (ammonia)
Typ czynnika chłodzącego	R717
Waga kg.	1570
Rozmiary	3450x960x2060 mm (LxWxH)
Compressor(s) type & model	Grasso 87 S
Display	GEA Grasso GSC
Uwagi	Y.o.b. 2005
Stock	2




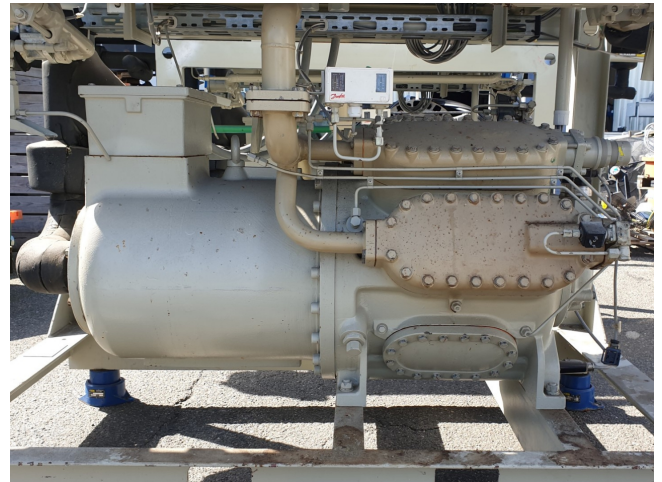
Description

Used Grasso INGENIUM 250

Used GEA Grasso Ingenium 250 water cooled chiller. Complete with a Grasso 87 S reciprocating compressor displacing 270 m³/h of R717 (NH3) refrigerant. The Compressor is configured with Capacity control, sight glass and a partial loaded start. Driven by a Siemens 1PK6 253-4NC99-Z 3-Phase Electric motor, with 55 kW and 1470 RPM at 50 Hz. Furthermore this split-chiller is equipped with a shell & tube evaporator and shell & tube condenser. *All components of this used chiller will be tested on adequate functionality. Choosing HOSBV means buying with warranty and we will rinse our products with an industrial cleaning before shipping to our customers. *If requested we are happy to arrange your shipment.



 Grasso Kältemaschinenbau Halle GmbH Berliner Straße 130, D-06258 Schkopau			
Type/type Ingenium	250	Serien-Nr. serial-No.	141829
Herstelljahr build in	2005	Leermasse weight empty	1570 kg
Kältemittel refrigerant	R 717	Kältemittelfüllung refrigerant filling	285 kg
Zulässiger Betriebsdruck/ max. operating pressure			
Hochdruckseite/ high pressure side	23	bar	
Niederdruckseite/ low pressure side	16	bar	



 Grasso Grasso Products B.V., 's-Hertogenbosch, The Netherlands			
TYPE TYP	GRASSO 87 S	No Nr	05051191
2005	NH3	270	m ³ /h
P ₁ /P _s	25,5	bar(e)	n _{max} 1500 rpm

